

City of
Mountain View

Biodiversity Strategy and Urban Forest Plan

PRC Meeting | September 11, 2024

SFEI | AQUATIC
SCIENCE
CENTER

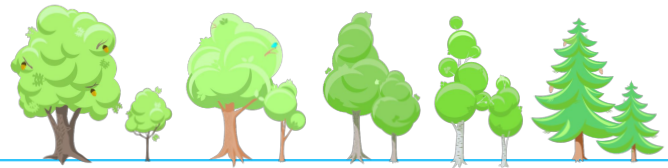
SAN FRANCISCO ESTUARY INSTITUTE & THE AQUATIC SCIENCE CENTER

Introductions

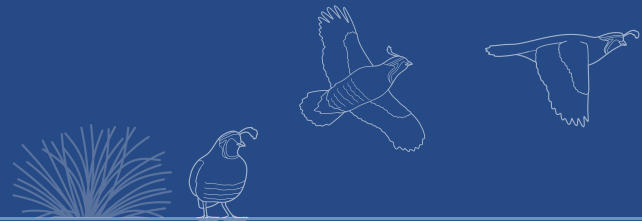


Agenda

- Project overview & timeline
- Highlights:
 - Existing conditions
 - Engagement
- Next steps



Project overview & timeline



Mountain View Biodiversity and Urban Forest Plan

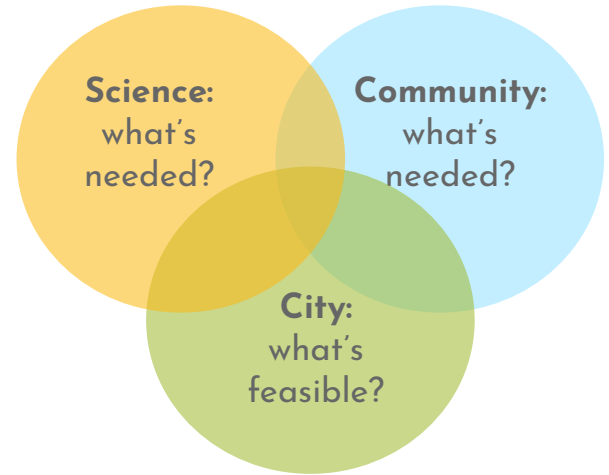
What is it? A set of **visions, goals and objectives** based on **science & community priorities** to improve biodiversity and the urban forest for increased access to, enjoyment of, and benefits from nature.

Biodiversity

The **diversity of all living things** in an ecosystem (e.g., mammals, pollinators, plants, birds).

Urban Forest

The **entire population of trees** in an urban area, including in both built-up and vegetated areas.



Mountain View Biodiversity and Urban Forest Plan

California-Native Species

All organisms (including plants and animals) that have **evolved in and are adapted to** California's physical and biological conditions.

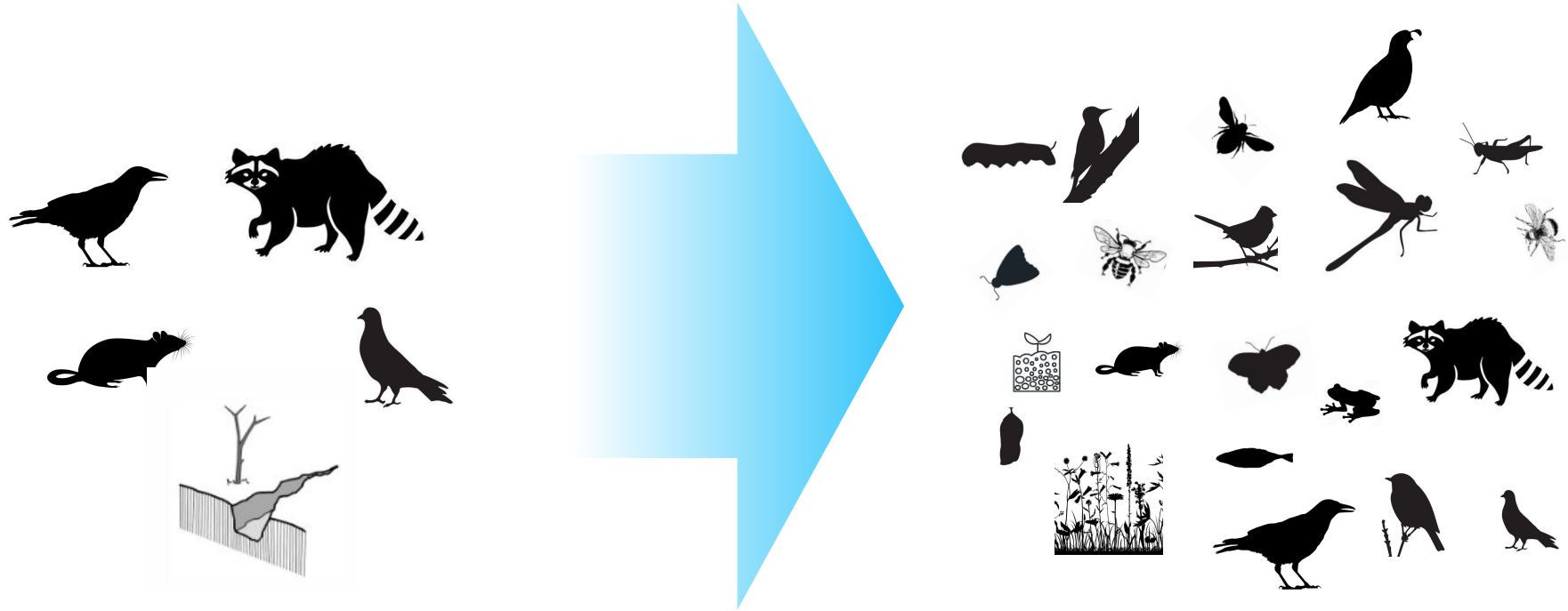
Climate-Adapted & Regionally-Appropriate Species

Organisms that may not be native to California, are **not invasive**, and can **tolerate the region's climate, soils, and other environmental characteristics**.

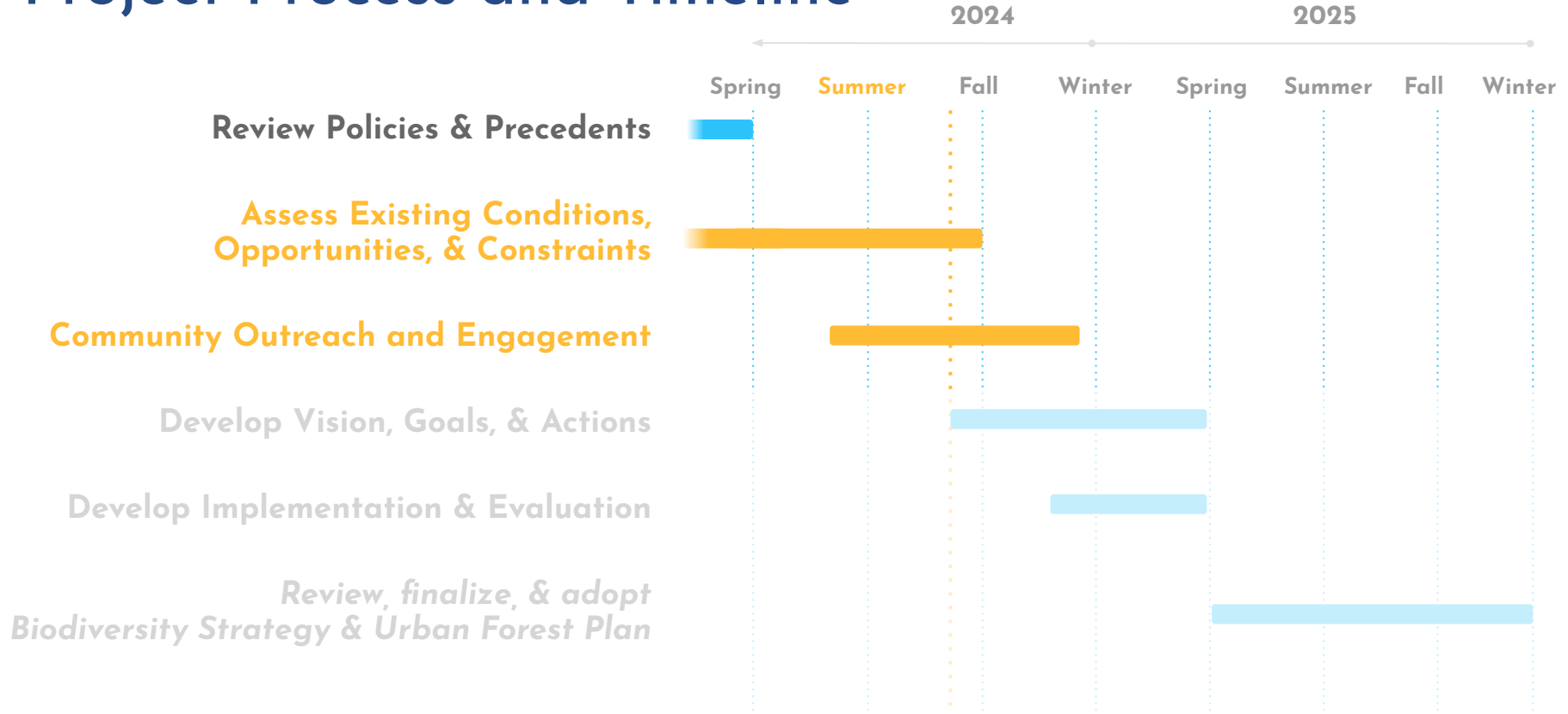
Resilience

The ability of something to **continue to provide desired functions over time**, even when faced with disturbances and stressors.

Expected biodiversity benefits of urban greening: shifting ecological communities



Project Process and Timeline





Existing conditions



Policy & Precedent Review

- Reviewed local-, state-, and federal-level policies, plans, and scientific reports
- Distilled research into key themes, recommendations, needs, and opportunities, including:

Preserve and increase city **tree canopy cover**

Preserve, improve, and restore **existing wildlife habitat**

Create **new** habitats and open spaces

Improve **resiliency** and **habitat provision** of urban landscapes

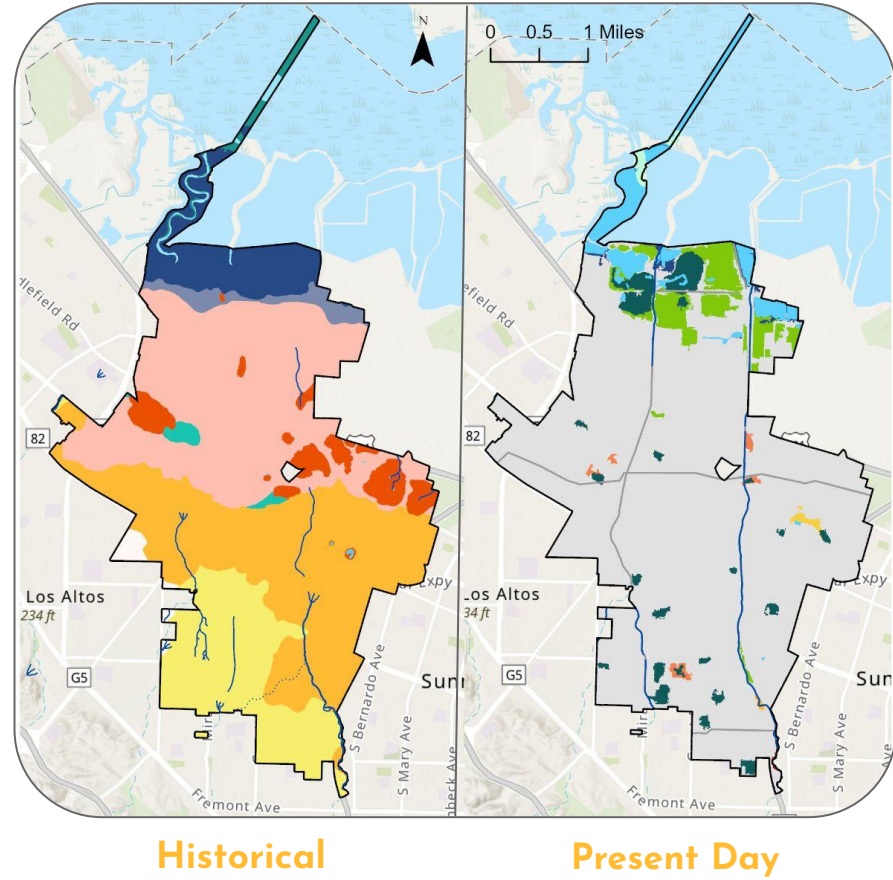
Implement and promote **Integrated Pest Management (IPM)** practices

Environmental **outreach, communication, and education**

Existing Conditions, Opportunities, & Constraints

Landscape change

	past	present		past	present
Tidal habitats	Shallow bay / channel	✓	✓	Riparian mixed hardwood	✓
	Tidal flat	✓		Oak woodland	✓
	Tidal marsh	✓	✓	Oak savanna	✓
	Alkali meadow	✓		Chaparral	✓
Freshwater wetland habitats	Valley freshwater marsh	✓		Annual grasses and forbs	✓
	Perennial freshwater pond	✓	✓	Non-native / ornamental grass	✓
	Willow grove	✓		Non-native / ornamental conifer / hardwood	✓
	Wet meadow	✓		Agriculture	✓
	Creek	✓	✓	Urban / developed	✓
	Artificial Path		✓		
Upland habitats					

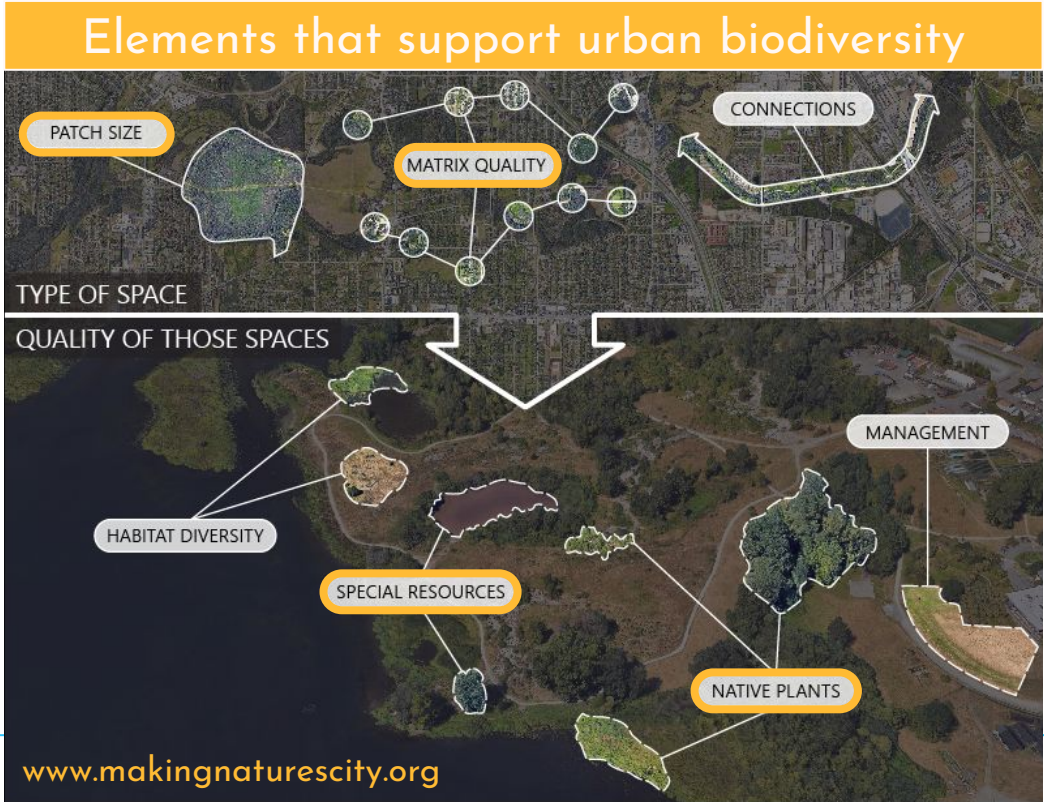
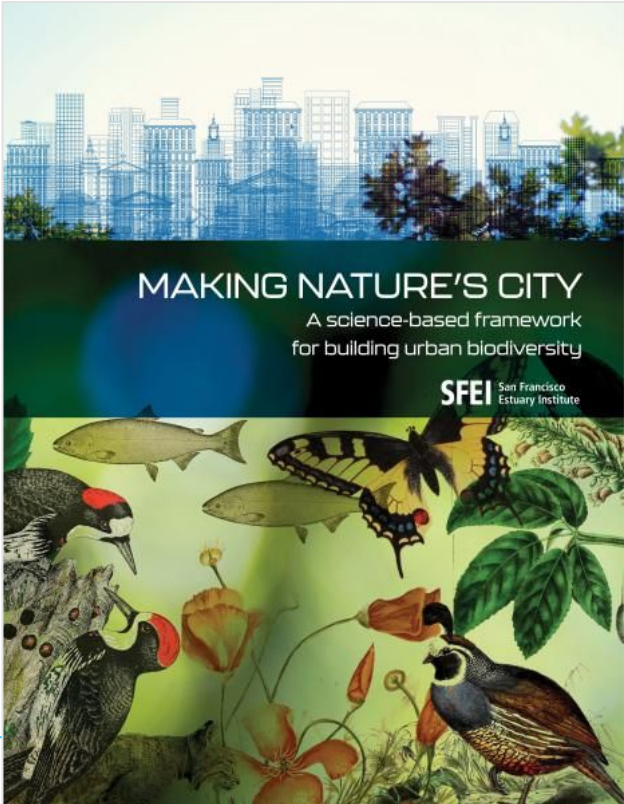


Data sources:

SFEI Western Santa Clara Valley
Historical Ecology Study
SFEI Historical Baylands

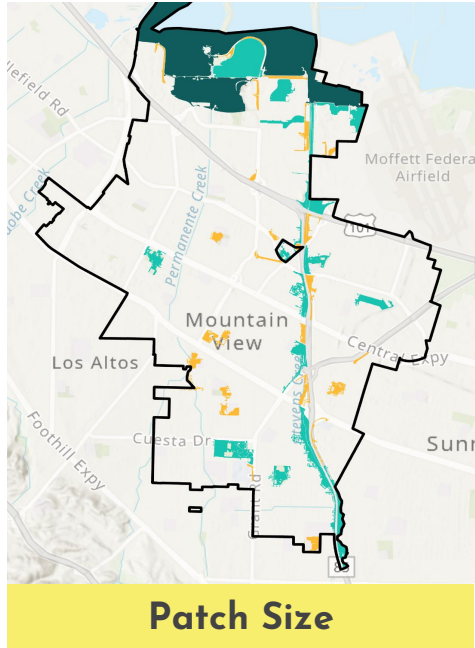
USDA Forest Service vegetation maps

Urban Biodiversity Framework

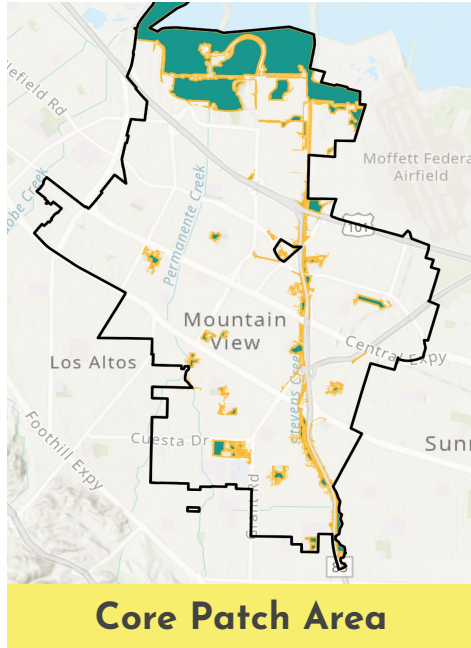


Habitat patch conditions

> 2 acres > 10 acres > 130 acres



Core Edge

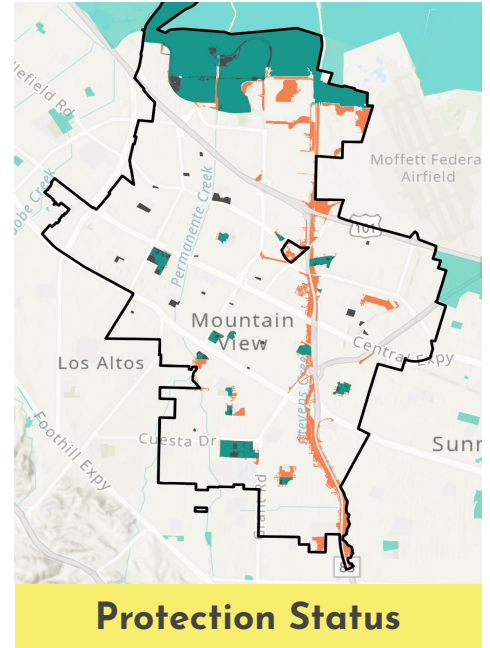


Habitat patches in Mountain View

Protected Unprotected

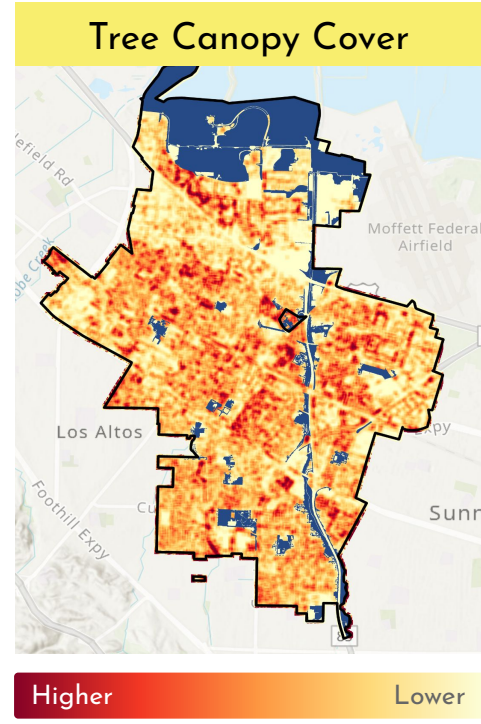
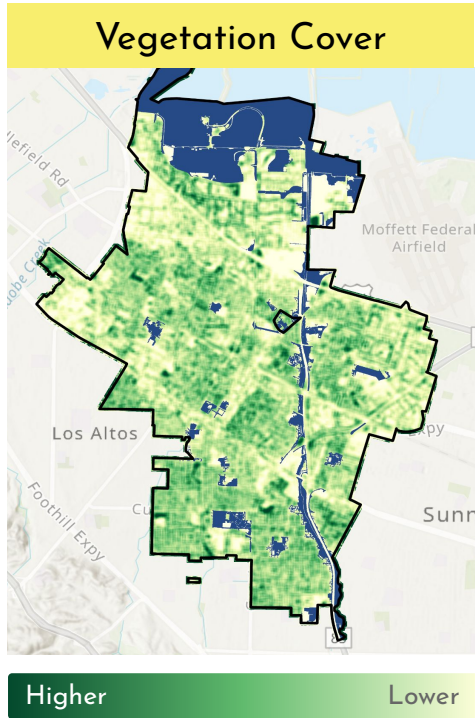
Other park areas

Other park area (not a patch) Parks outside MV



PRELIMINARY FIGURES

“Urban matrix” quality



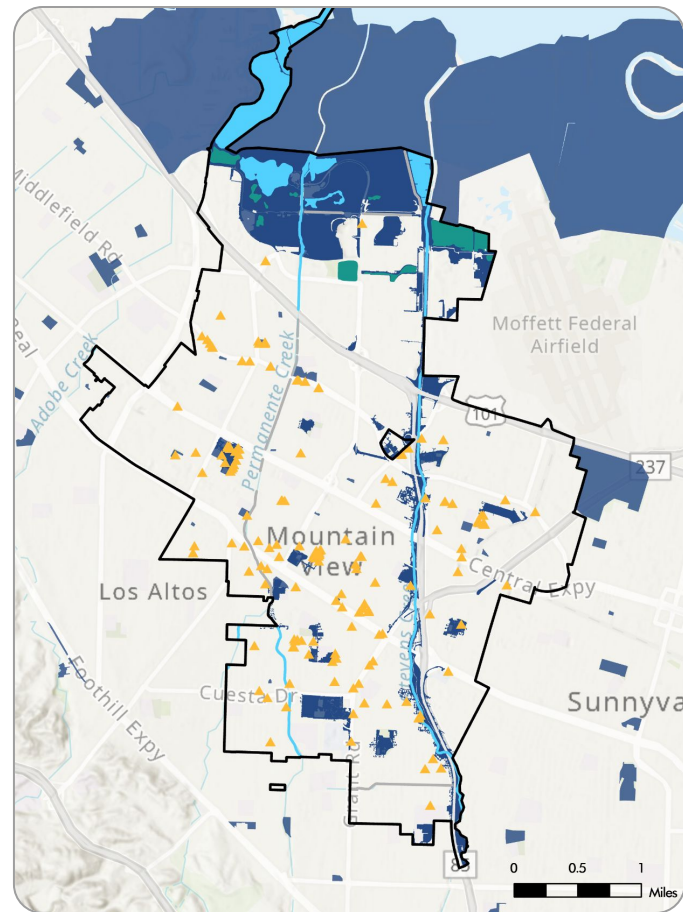
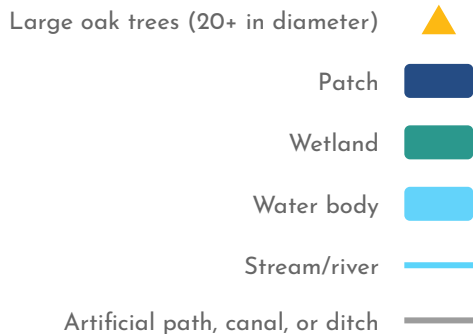
Habitat patches

PRELIMINARY FIGURES

Special Ecological Resources

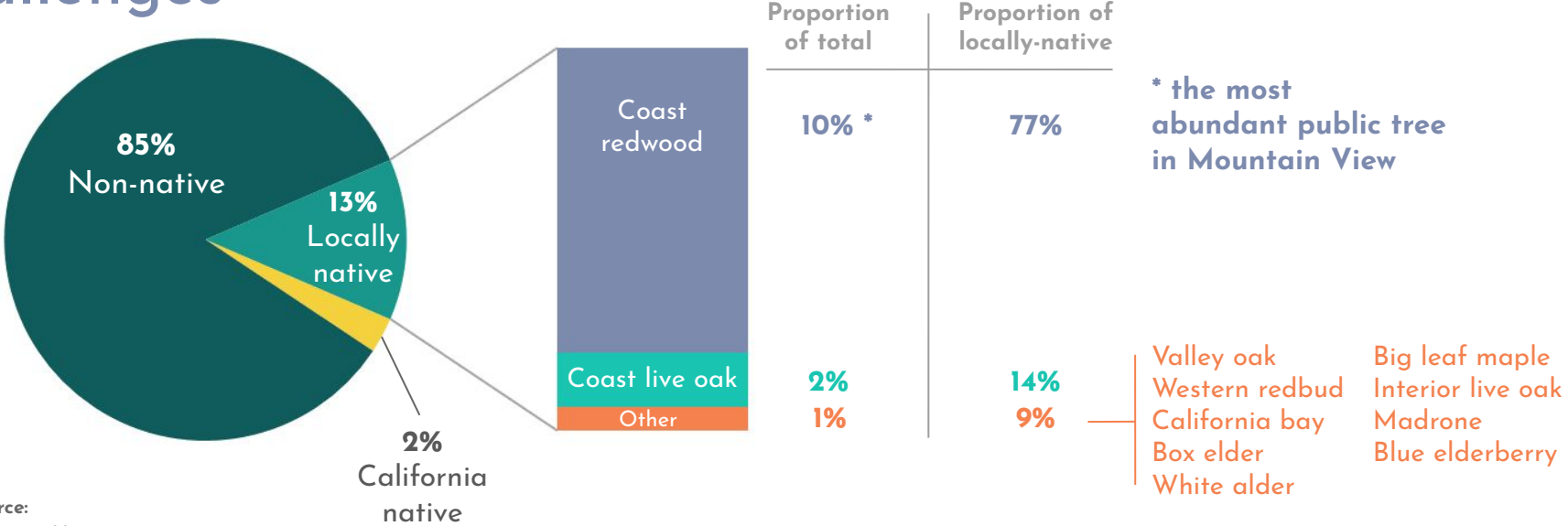
Data sources:

SFEI Bay Area Aquatic Resource Inventory
National Hydrography Dataset
Bay Area Protected Areas Database
California Protected Areas Database
California Conservation Easement Database
Trust for Public Land ParkServe database
Mountain View Public Tree Inventory (2015)



PRELIMINARY FIGURES

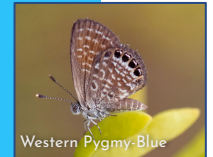
Public trees: Not many public trees are native to the region, and climate change will pose further challenges



Data source:
Mountain View Public Tree Inventory (2015)

Focal species

- Selecting ~ 10 species associated with habitats in Mountain View, both historically and today
- Their stories will be woven throughout the Plan



PRELIMINARY LIST

Engagement



Community engagement schedule

<i>Mountain View Farmers' Market Pop-Up</i>	<i>Sat, Jun 30</i>	<i>complete</i>
<i>General Community Workshop</i>	<i>Thurs, Jul 18</i>	<i>complete</i>
<i>Kids & Families Workshop</i>	<i>Sat, Aug 10</i>	<i>complete</i>
Online Community Survey	Launching!	
Teen Workshop	Mon, Sept 16	<i>up next!</i>
Senior Center Pop-Up	Wed, Oct 2	
Mandarin- and Spanish-speaking Workshops	Wed, Oct 2	
General Community Workshop	Thurs, Oct 17	

Other City and partner engagements

Workshop with stakeholders	Nov 2024
City project team input and support with draft	Jan-April 2025
City releases draft to PRC, other advisory bodies	May 2025
PRC meeting: discuss draft Plan	Jun 11, 2025
Environmental Planning Commission: discuss draft Plan	Jun 18, 2025
PRC meeting: discuss revised draft	Aug 2025
City Council meeting: review revised draft	Fall 2025
City council meeting: review final draft	Dec 2025

Pop-up events

Native is Sweet...
Sweet like
Honey
Milk!

Stormwater
design

community
gardens

Community
gardens

Roadside
greening w/
native plants

more
native plants
more native
insects

MORE
PARK
SPACE

Biodiversity and Urban Forest Plan

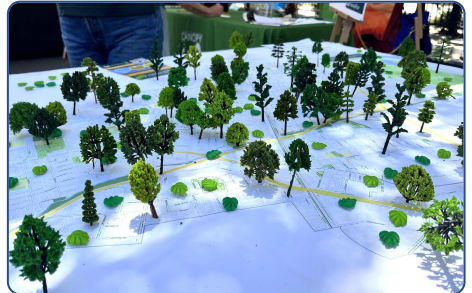
The City of Mountain View is developing a Biodiversity & Urban Forest Plan to enhance and support tree canopy and biodiversity, including mammals, pollinators, birds, and native plants, to enrich community's access to, enjoyment of, and benefits from nature. We are inviting our community to take part in shaping the City's vision for a biodiverse future.

SHARE YOUR THOUGHTS:
Do you want to see more nature in Mountain View? What do you imagine 'more nature' in the city could look like? How should it sound or smell? What should it feel like?

MORE
TREES!



require new
housing dev
to install
CA native yard



What Are Your Priorities?

The City of Mountain View's Biodiversity and Urban Forest Plan will set priorities and outline practical steps that the City can take to better support urban biodiversity and trees. To set those priorities, we want your input on which topics are most important to you.

Place a sticker onto the TWO (2) priorities you care most about.

Native or drought-tolerant landscaping	Landscaping with benefits to people and nature	Roadside landscaping	Private/commercial landscaping or tree policies	Street tree policies
Wood tree policies	Heritage tree policies	Improving habitat in green spaces	Access to natural spaces	Other

Plant
Milkweed for
Monarchs

SAVE +
MORE
BIKE PATHS

NATIVE
PLANTS

More female
trees to
reduce
allergens

herb +
vegetable
garden

More
Trees!

More
SOUND
Birds

trees!

More
Neighbor
hood Parks

Public Workshops



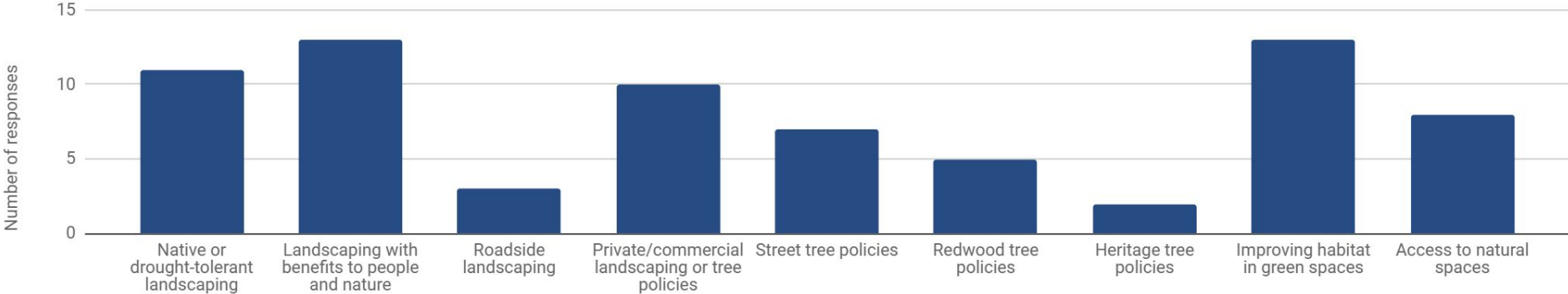
Engagement highlights

What do you hope nature will look (*sound, feel, smell*) like in Mountain View?



Engagement highlights

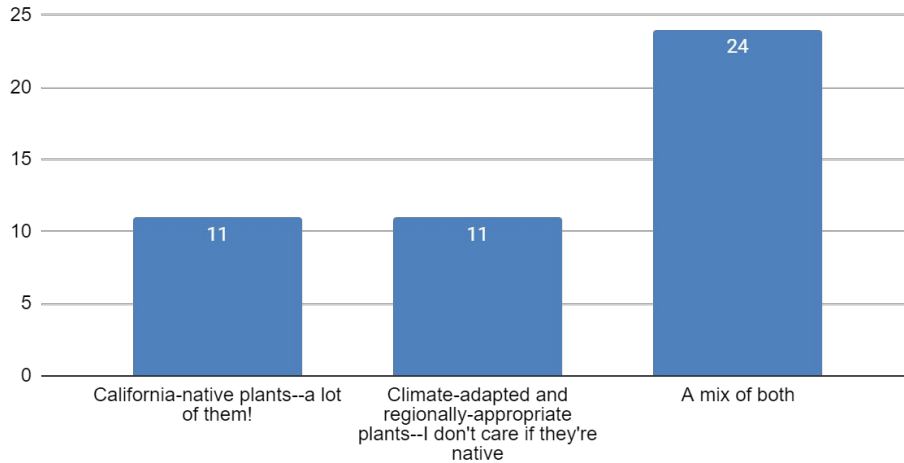
What are your priorities?



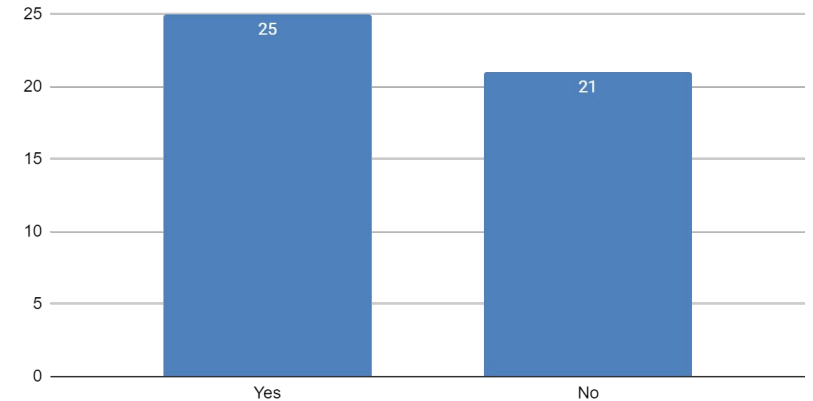
PRELIMINARY FIGURES

Engagement highlights

What type of landscaping would you like to see more of in Mountain View?



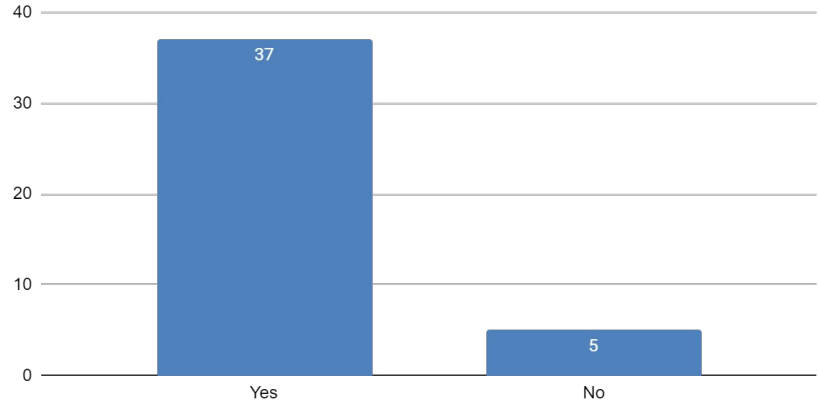
Should older trees be proactively replaced, if expected to fail in the near future?



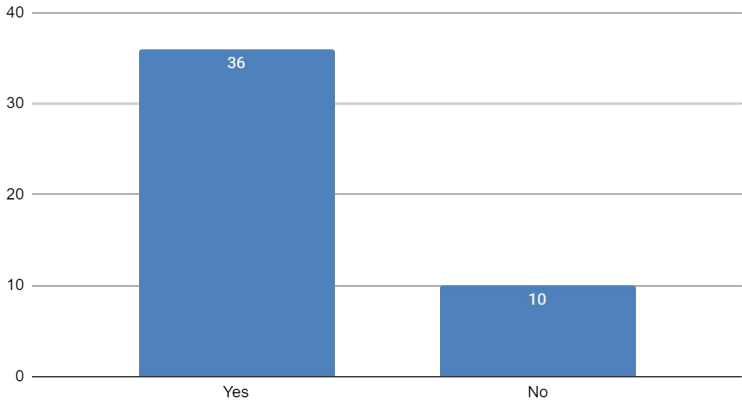
PRELIMINARY FIGURES

Engagement highlights

For underutilized areas in parks, would you be OK replacing grass with resilient native landscaping?



When street trees must be removed, should street tree replacement – supplied and planted by the City – be required of the property owner?



PRELIMINARY FIGURES

Community survey to inform the **Vision and Goals**

**Aligning the vision,
prioritizing goals**

Why are biodiversity and trees important to the Mountain View community?

Managing trade-offs

What are the **concerns** of biodiversity and urban forestry initiatives?

**Opportunities and
threats**

Where is biodiversity and urban forest support needed? What are the **challenges** to address?

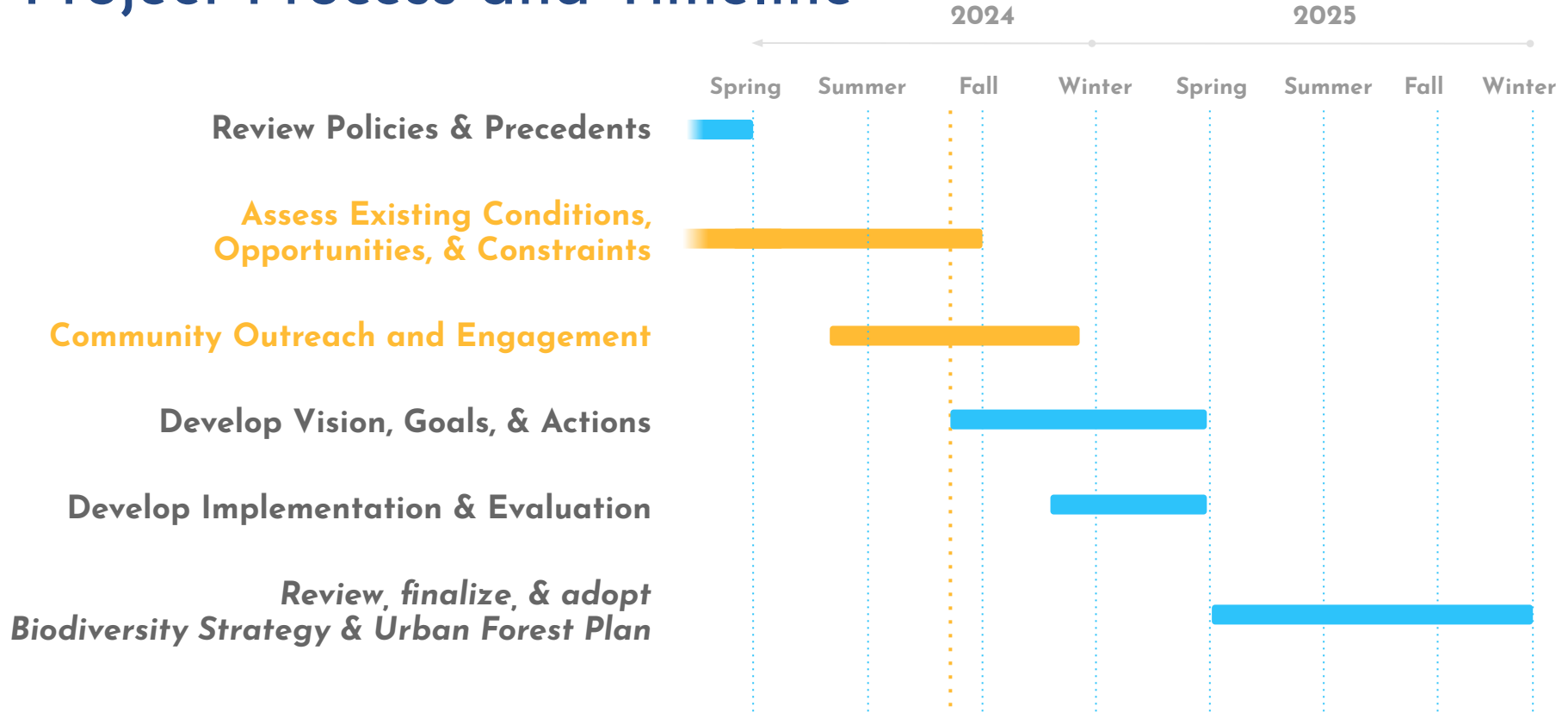
**Strategies for
implementation**

What should the City focus on?

Next steps



Project Process and Timeline



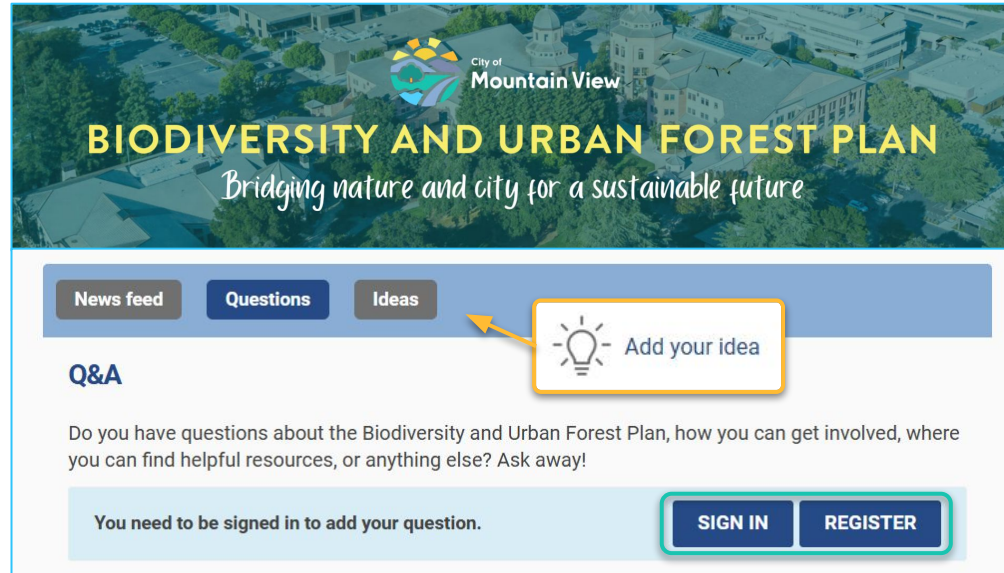
The public is welcome to join us at future engagement events!

Online Community Survey	<i>Launching!</i>
Teen Workshop	Mon, Sept 16
Senior Center Pop-Up	Wed, Oct 2
Mandarin- and Spanish-speaking Workshops	Wed, Oct 2
General Community Workshop	Thurs, Oct 17

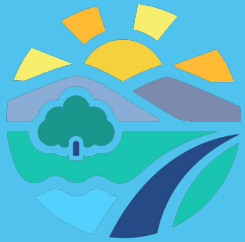
Continue the conversation on our website!

If there are topics we missed or you have additional feedback, **please visit our website and share with us!**

BiodiversityMV.com



BiodiversityMV.com



City of
Mountain View

SFEI | AQUATIC
SCIENCE
CENTER
SAN FRANCISCO ESTUARY INSTITUTE & THE AQUATIC SCIENCE CENTER