

VIRTUAL COMMUNITY INPUT MEETING

Tuesday, August 18, 2020

6:00pm-7:00pm PST

https://www.mountainview.gov/depts/pw/projects/el_monte_corridor_study.asp

El Monte Avenue Corridor Study

Safer Biking. Safer Walking.





El Monte Avenue Corridor Study

Public Outreach Meeting # 2

August 18, 2020

Presented by

Darwin Galang (Associate Civil Engineer – City of Mountain View)

Teferi Abere (Project Manager – Mott MacDonald)

Contributors

Lorenzo Lopez (City Traffic Engineer – City of Mountain View)

Shruti Malik (Community Outreach Lead) & Dorry Funaki (Planner II) – Mott MacDonald



Overview

- Project Goals and Meeting Purpose
- Study Location
- Corridor-Wide Proposed Improvements
- Intersection-Specific Proposed Improvements
- Comparison of Alternatives
- Other Alternatives Considered
- Project Schedule
- We Want to Hear From You
- Questions



Project Goals and Meeting Purpose

- Project Goals

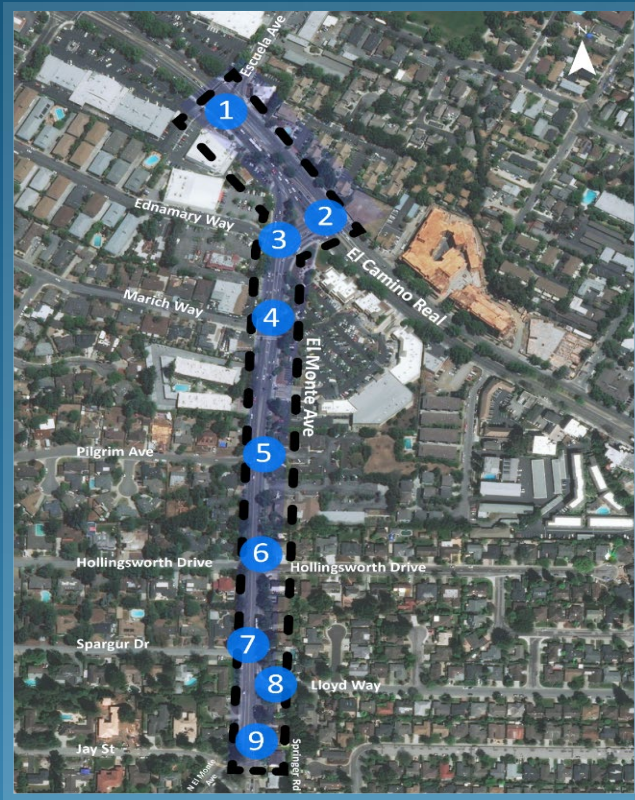
- Develop multimodal transportation conceptual plans for pedestrian and bicycle safety
- Improve traffic operations along the corridor

- Meeting Purpose

- Present improvement alternatives
- Gather public input/comment
- Address questions raised during the meeting



Study Location



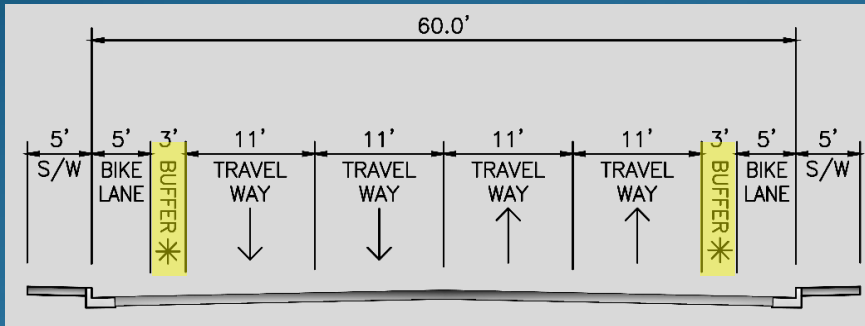
- 1 El Camino Real/Escuela Ave
- 2 El Camino Real/El Monte Ave
- 3 El Monte Ave/Ednamary Way
- 4 El Monte Ave/Marich Way
- 5 El Monte Ave/Pilgrim Ave
- 6 El Monte Ave/Hollingsworth Dr.
- 7 El Monte Ave/Spargur Dr.
- 8 El Monte Ave/Lloyd Way
- 9 El Monte Ave/Springer Rd/
Jay St.

Corridor-Wide Proposed Improvements

Alternatives 1 and 2: Four-lane sections with buffered bike lanes

Alternative 1:

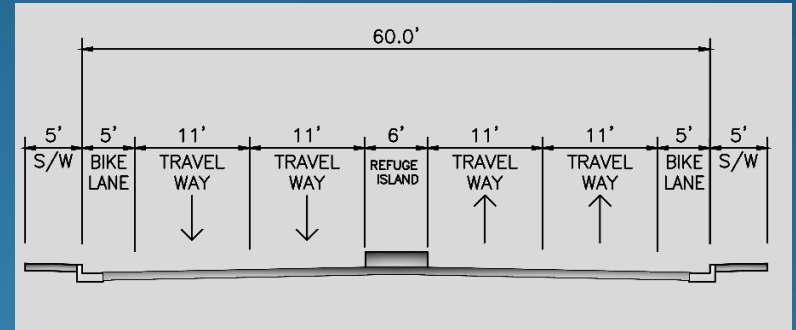
No access restriction on side-streets



Typical 4-Lane Section

Alternative 2:

Side-street access restrictions at some locations



Typical 4-Lane Section with Refuge Island
(Buffered Bike Lanes Outside of Refuge
Island Areas)

Intersection-Specific Proposed Improvements

1 El Camino Real/Escuela Ave

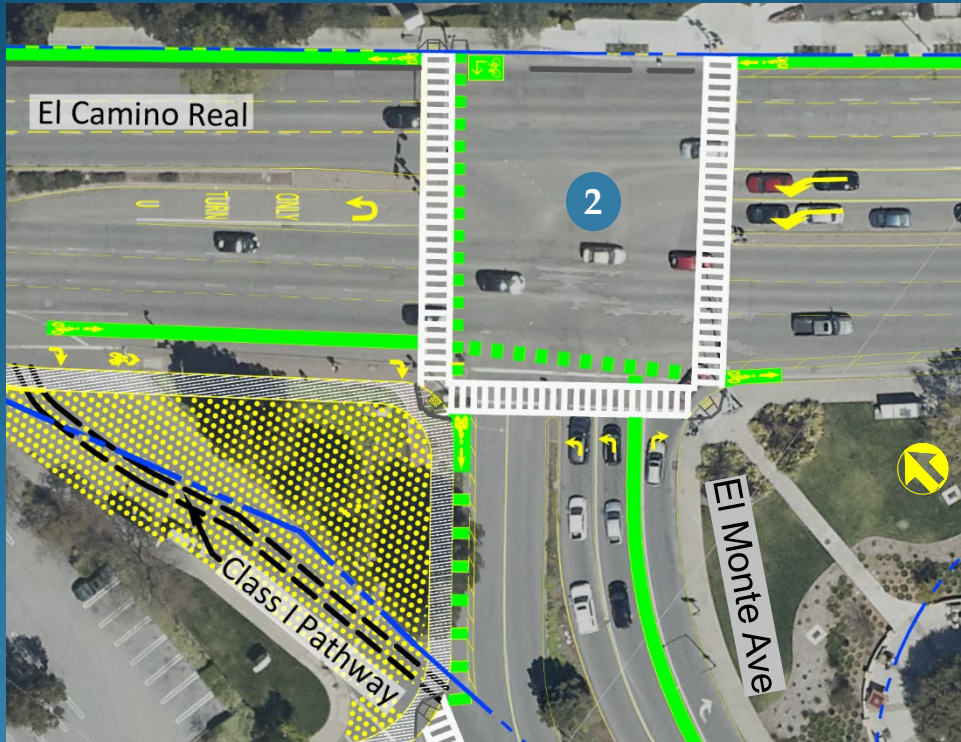


Alternatives 1 and 2

- High visibility crosswalks
- Separated Class II bike lane
- Bike box for cyclists
- Signal phasing improvements
- Dedicated left turn
- Separate curb ramps for each crosswalk
- Bulb-out and tighter curb radii

Intersection-Specific Proposed Improvements

2 El Camino Real/El Monte Ave



Alternatives 1 and 2

- High visibility crosswalks
- Separated Class II bike lane
- Dedicated bikeway intersection
- Right turn slip lane removal
- Separated Class I pathway and landscape area
- Leading pedestrian phasing
- New ADA compliant curb ramps

Intersection-Specific Proposed Improvements

3 El Monte Ave/Ednamary Way

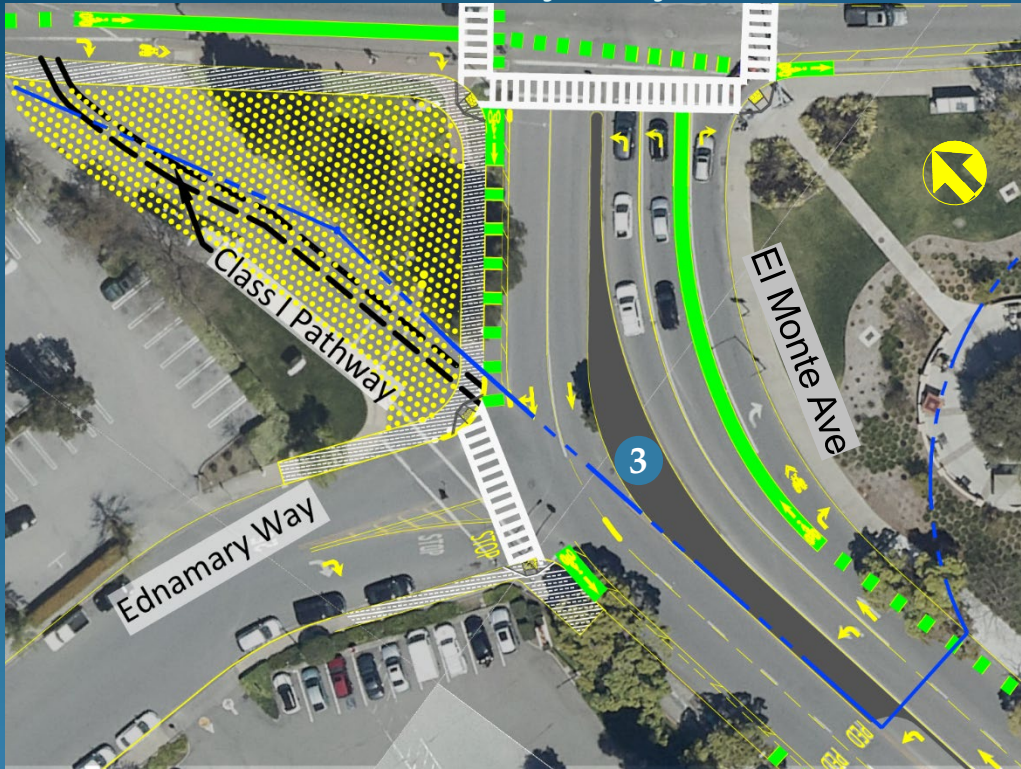


Alternative 1 – With Side Street Access

- High visibility crosswalk
- Separated Class II bike lane
- New sidewalk and curb ramps at Ednamary Way
- **Bulb-outs**

Intersection-Specific Proposed Improvements

3 El Monte Ave/Ednamary Way



Alternative 2 - No Side Street Access

- High visibility crosswalk
- Separated Class II bike lane
- New sidewalks and curb ramps at Ednamary Way
- New concrete median island along El Monte Avenue
- Left-turn restriction from El Monte Ave to Ednamary Way
- Wider lane widths on El Monte Ave and Ednamary Way

Intersection-Specific Proposed Improvements

3 El Monte Ave/Ednamary Way



Alternative 1 – With Side Street Access



Alternative 2 – No Side Street Access

Intersection-Specific Proposed Improvements

4 El Monte Ave/Marich Way



Alternative 1 – No Median Modification

- Buffered Class II bike lanes
- Existing crosswalk and LED enhanced signs at Marich Way to remain
- Dashed green bike lanes at driveways

Intersection-Specific Proposed Improvements

4 El Monte Ave/Marich Way



Alternative 2 – With Median Modification

- Buffered Class II bike lanes
- Existing crosswalk at Marich Way to remain
- Dashed green bike lanes at driveways
- **New modified concrete median island along El Monte Avenue**

Intersection-Specific Proposed Improvements

4 El Monte Ave/Marich Way



Alternative 1 – No Median Modification



Alternative 2 – With Median Modification

Intersection-Specific Proposed Improvements

5 El Monte Ave/Pilgrim Ave

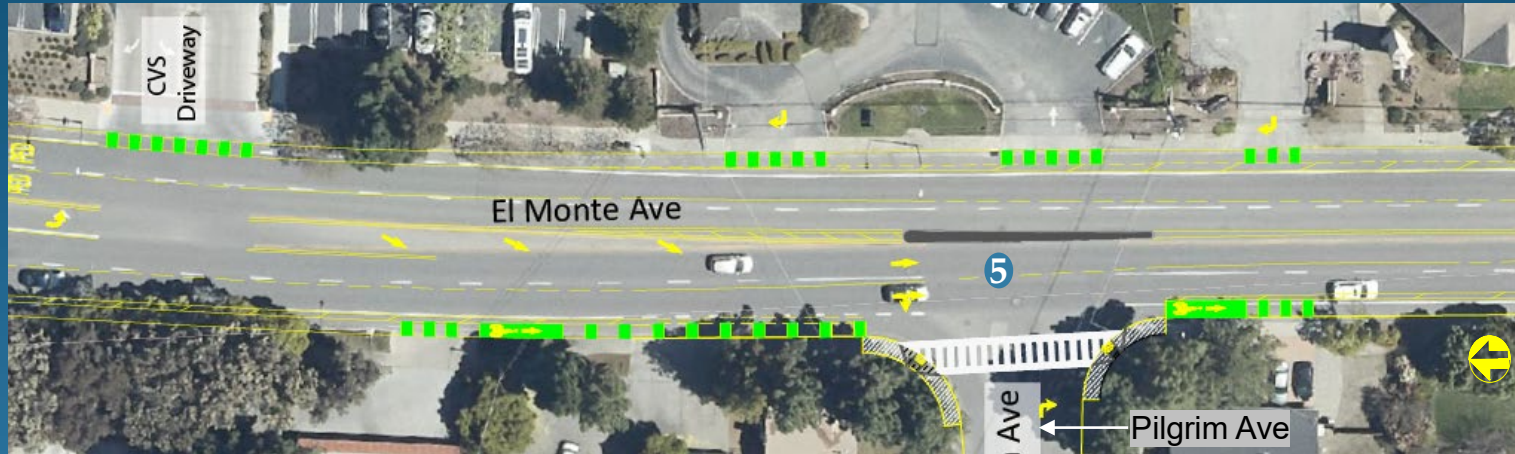


Alternative 1 – With Side Street Access

- Buffered Class II bike lanes
- High visibility crosswalk
- ADA compliant curb ramps at Pilgrim Ave
- Dashed green bike lanes at driveways
- Merge lane pavement marking from CVS driveway

Intersection-Specific Proposed Improvements

5 El Monte Ave/Pilgrim Ave



Alternative 2 – No Side Street Access

- Buffered Class II bike lanes
- High visibility crosswalk
- ADA compliant curb ramps at Pilgrim Ave
- Dashed green bike lanes at driveways
- Merge lane pavement marking from CVS driveway
- **New median island to prevent left turns in/out of Pilgrim Ave**

Intersection-Specific Proposed Improvements

5 El Monte Ave/Pilgrim Ave



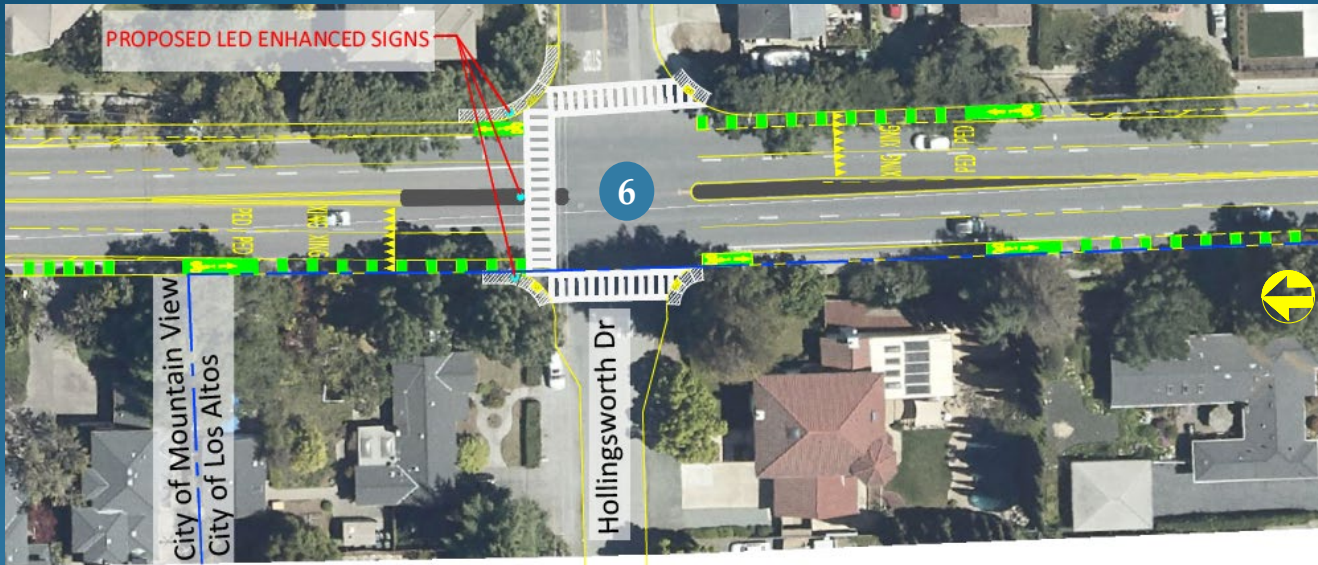
Alternative 1 – With Side Street Access



Alternative 2 – No Side Street Access

Intersection-Specific Proposed Improvements

6 El Monte Ave/Hollingsworth Dr

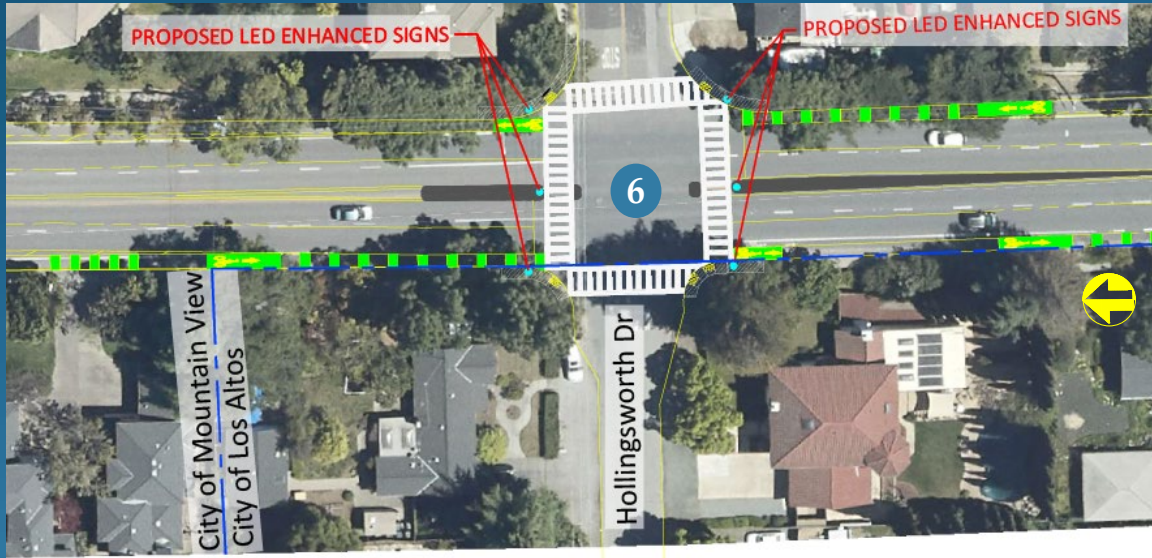


Alternative 1 – North Crosswalk Only

- Buffered Class II bike lanes
- High visibility crosswalks
- Pedestrian refuge island
- ADA compliant curb ramps at Hollingsworth Dr
- New crosswalk with LED enhanced signs on the north leg of intersection

Intersection-Specific Proposed Improvements

6 El Monte Ave/Hollingsworth Dr

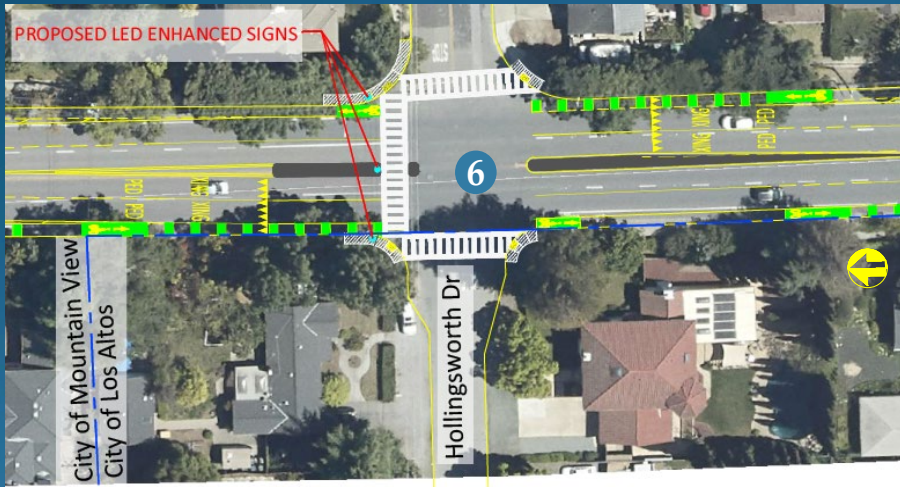


Alternative 2 – North and South Crosswalks

- Buffered Class II bike lanes
- High visibility crosswalks
- Pedestrian refuge islands ADA compliant curb ramps at Hollingsworth Drive
- New crosswalks with LED enhanced signs on the north and south legs of the intersection.

Intersection-Specific Proposed Improvements

6 El Monte Ave / Hollingsworth Dr



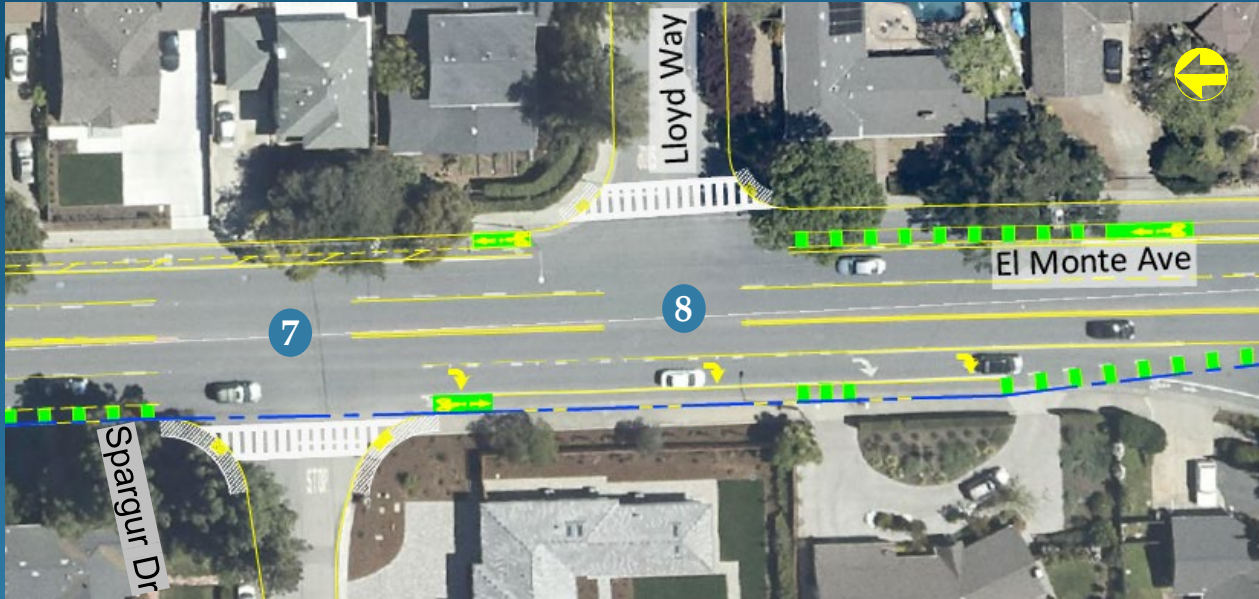
Alternative 1
North Crosswalk Only



Alternative 2
North and South Crosswalks

Intersection-Specific Proposed Improvements

7 El Monte Ave/Spargur Dr & 8 El Monte Ave/Lloyd Way



Alternative 1 – With Side Street Access

- Buffered Class II bike lanes
- High visibility crosswalks
- ADA compliant curb ramps
- Dashed green bike lanes at driveways

Intersection-Specific Proposed Improvements

7 El Monte Ave/Spargur Dr & 8 El Monte Ave/Lloyd Way



Alternative 2 – No Side Street Access

- Buffered Class II bike lanes
- High visibility crosswalks
- ADA compliant curb ramps
- Dashed green bike lanes at driveways
- **New median island to prevent left turns in/out of Spargur Drive**

Intersection-Specific Proposed Improvements

7 El Monte Ave/Spargur Dr & 8 El Monte Ave/Lloyd Way



Alternative 1 – With Side Street Access



Alternative 2 – No Side Street Access

Intersection-Specific Proposed Improvements

9 El Monte Ave/Springer Rd/Jay St



Alternatives 1 and 2

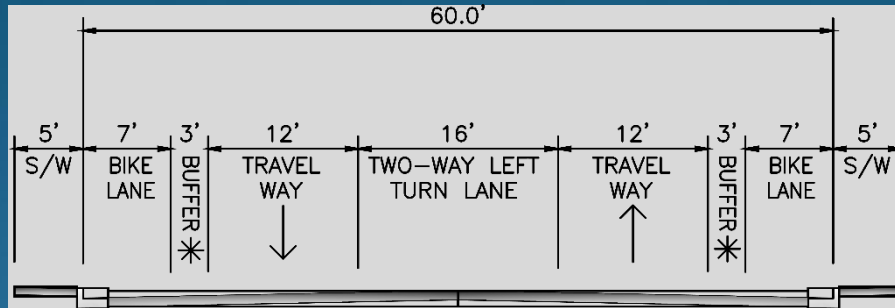
- Buffered Class II bike lanes
- New concrete median island at center lane



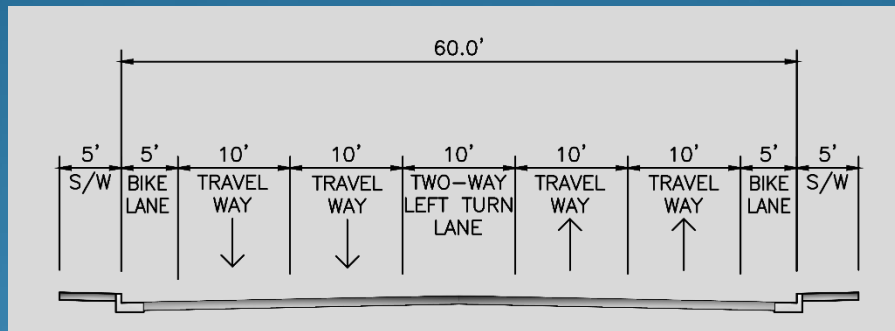
Comparison of Alternatives

Alternatives	Pros	Cons
Alternative 1 – With Side Street Access	<ul style="list-style-type: none">• Existing access maintained• Enhanced ped/bike access	<ul style="list-style-type: none">• No reduction in conflict points between left-turning vehicles and peds/bikes• Challenge to find gap in traffic to turn left to/from El Monte Ave
Alternative 2 – No Side Street Access	<ul style="list-style-type: none">• Enhanced ped/bike access• Enhanced safety for peds/bikes• Reduced conflict points between vehicles and peds/bikes• Improved traffic operations on El Monte Ave	<ul style="list-style-type: none">• Restricted left-turns at Pilgrim Ave and Spargur Dr to/from El Monte Ave• Restricted left-turns from El Monte Ave to Ednamary Way• Additional side street traffic

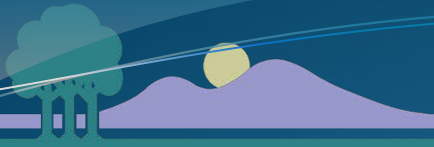
Other Alternatives Considered



Three-Lane Street on El Monte Ave

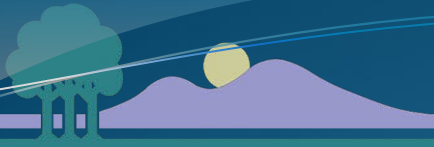


Five-Lane Street on El Monte Ave



Project Schedule

- BPAC – September/October 2020
- CTC – December 2020/January 2021
- Council – February/March 2021
- Complete study by early Spring 2021



We Want To Hear From You

- Which alternative do you prefer for Ednamary Way, Pilgrim Avenue, and Spargur Drive?
 - Alternative 1 – With Side Street Access
 - Alternative 2 – No Side Street Access
- Do you support the median island modification along El Monte Avenue at Marich Way?
- Do you prefer one or two crosswalks crossing El Monte Avenue at Hollingsworth Drive?



Questions?

For more information/Para mas informacion:

Darwin.Galang@mountainview.gov

(650) 903-6311

https://www.mountainview.gov/depts/pw/projects/el_monte_corridor_study.asp



Conceptual Plans

- Alternative 1

- Alternative 2

New Access Route

