



Grant Road and Sleeper Avenue Intersection Study B/PAC MEETING

February 24, 2021

Presented by

Darwin Galang (Associate Civil Engineer – City of Mountain View)
Andrew Dickinson (Project Manager – TJKM Transportation Consultant)

Contributors

Lorenzo Lopez (City Traffic Engineer – City of Mountain View)
Rutvij Patel (Task Lead – TJKM Transportation Consultant)



Overview

- Project Goals and Presentation Purpose
- Study Location
- Existing Conditions
- Proposed Intersection Improvements
- Comparison of Alternatives
- Other Project Alternatives Considered
- Community Meeting #1
- Project Schedule
- Questions



Project Goals and Presentation Purpose

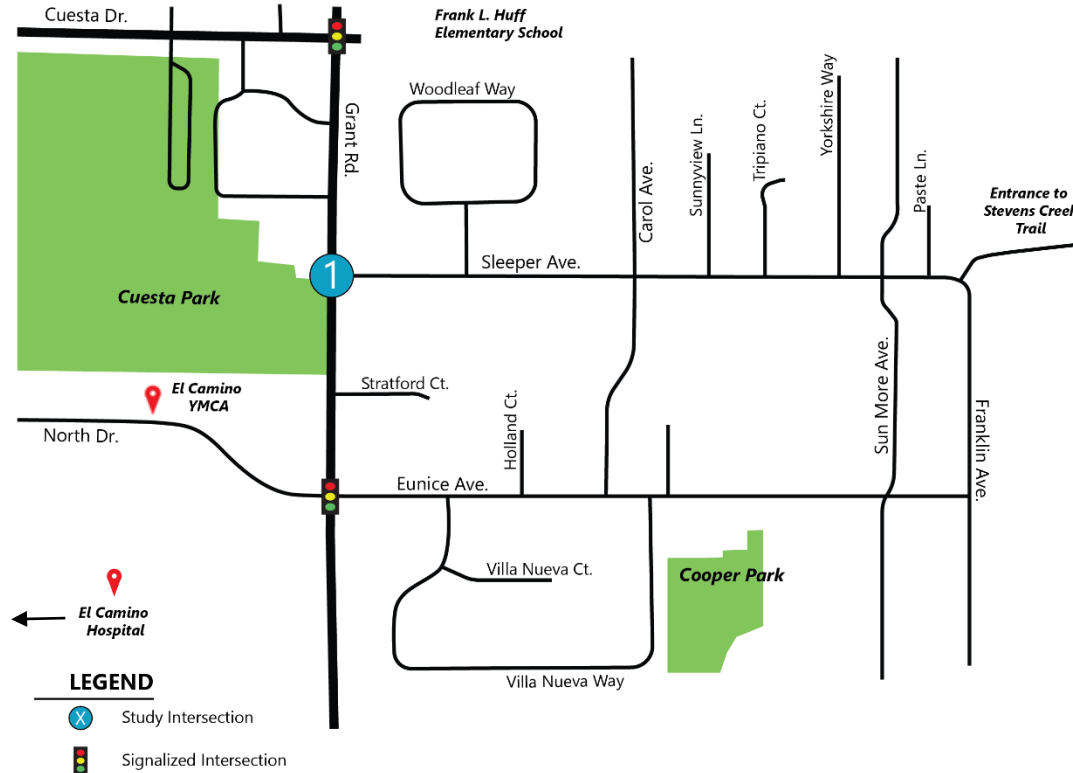
- Project Goals

- Develop and evaluate conceptual alternatives/improvements to facilitate safe movement of pedestrian and bicyclists crossing Grant Road at Sleeper Avenue

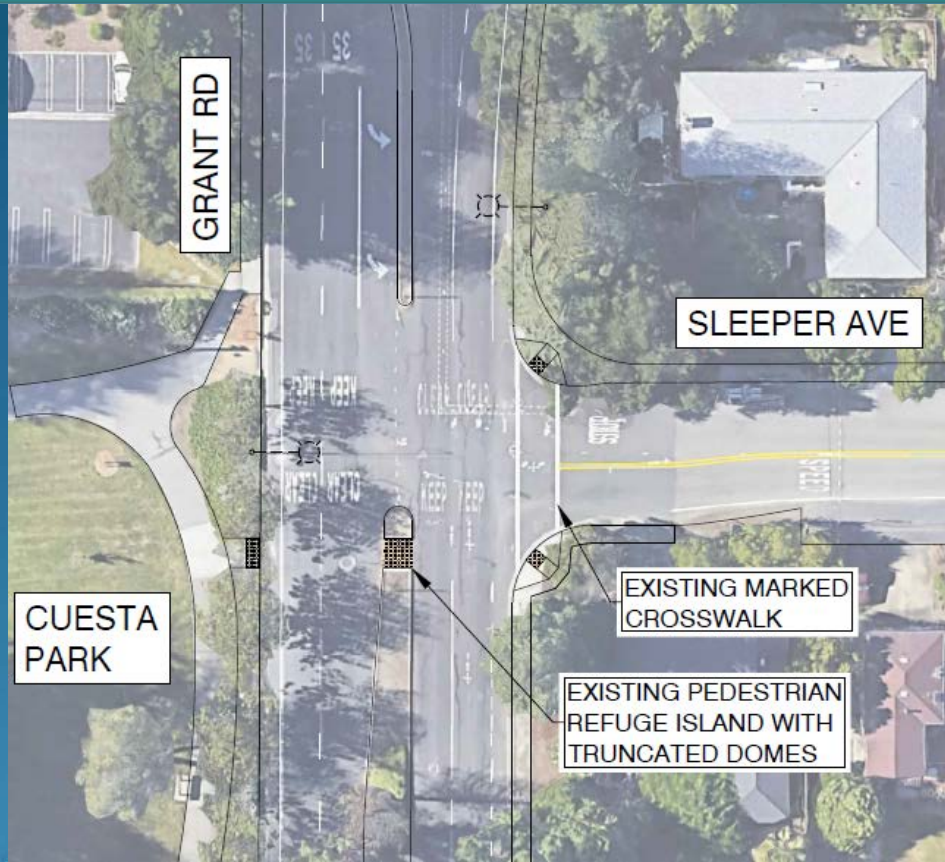
- Presentation Purpose

- Present improvement alternatives
- Recommendation to B/PAC:
 - Please provide input on a preferred alternative for the Grant Road and Sleeper Avenue Intersection Study

Study Location



Existing Conditions



Proposed Intersection Improvements

Pedestrian Hybrid Beacon (PHB)



Mountain View - El Camino Real and Distel Cir

Drivers

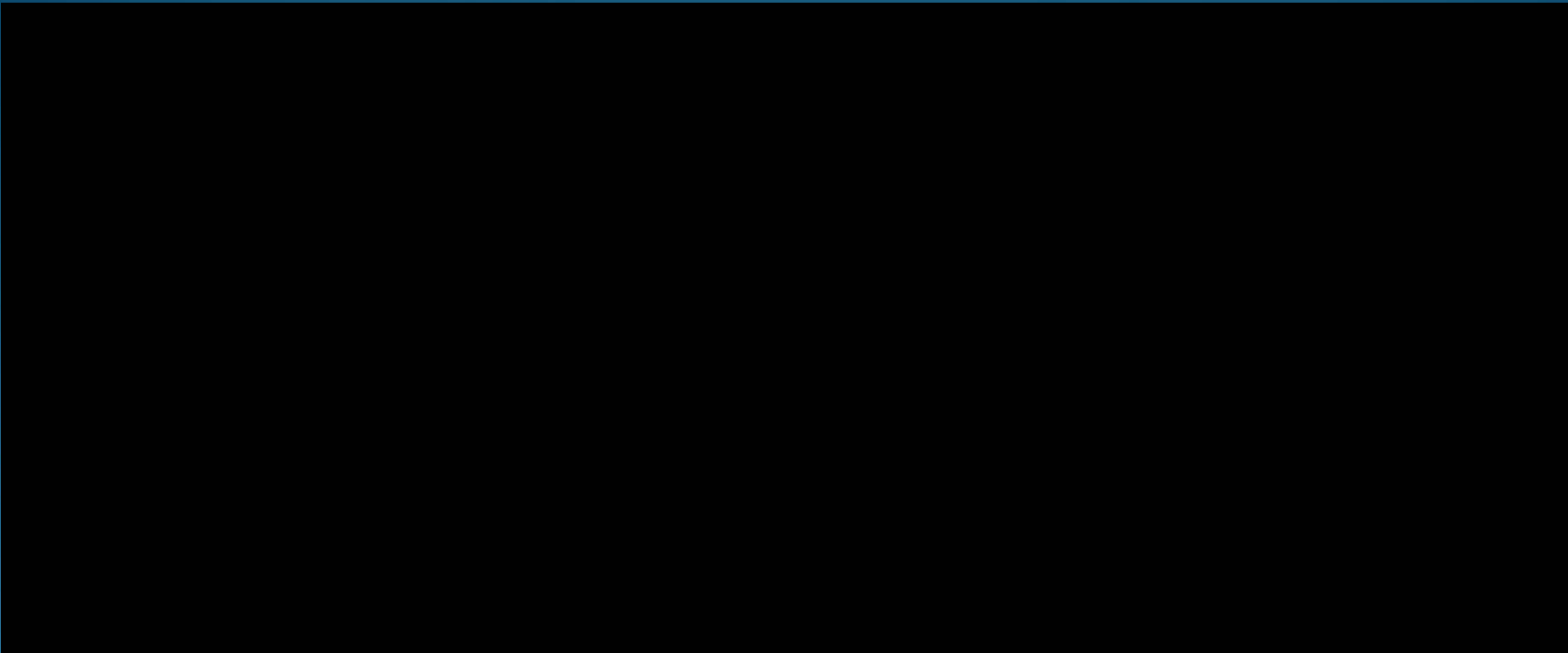
.. will see this	.. will do this
	Proceed with Caution
	Slow Down (Pedestrian has activated the push button)
	Prepare to Stop
	STOP! (Pedestrian in Crosswalk)
	STOP! Proceed with Caution if Clear
	Proceed if Clear

Pedestrians

.. will see this	.. will do this
	Push the Button to Cross
	Wait
	Continue to Wait
	Start Crossing
	Continue Crossing (Countdown Signal)
	Push the Button to Cross



Proposed Intersection Improvements



Proposed Intersection Improvements

Traffic Signal



Mountain View - Grant Road and Phyllis Ave/Martens Ave

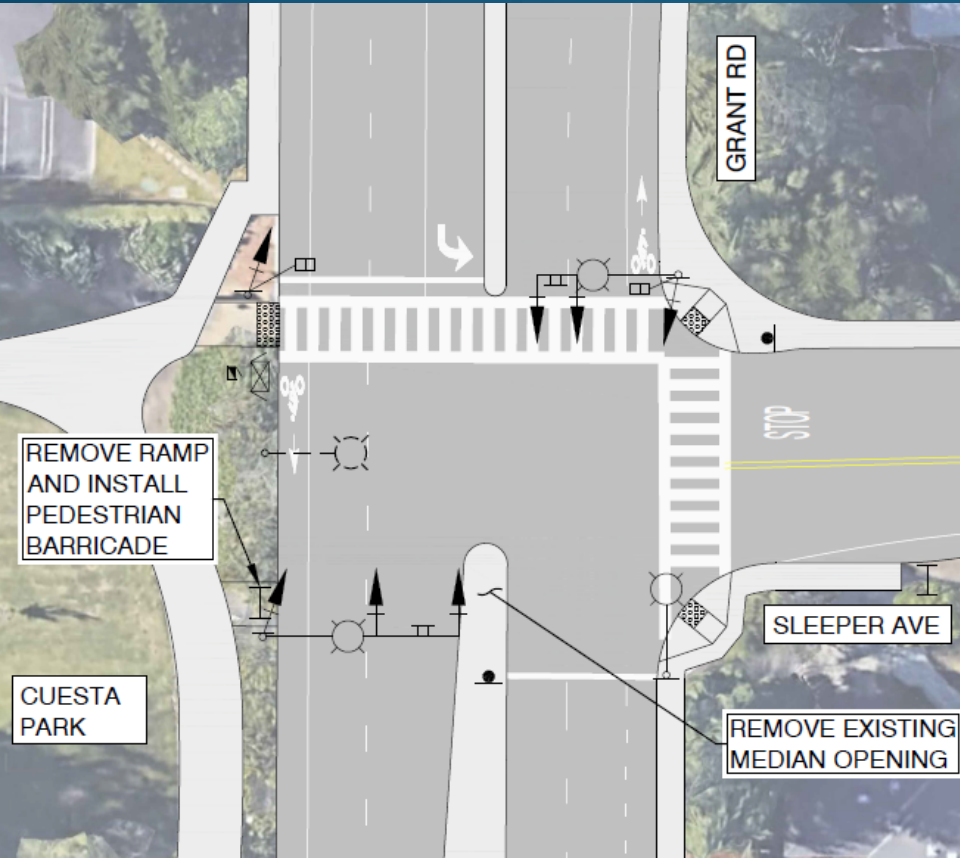


Project Alternatives

1. Pedestrian Hybrid Beacon (PHB) with a northern crosswalk
2. Pedestrian Hybrid Beacon (PHB) with a southern crosswalk and left-turn restriction from Sleeper Avenue
3. Traffic signal with a northern crosswalk
4. Keep existing condition as-is

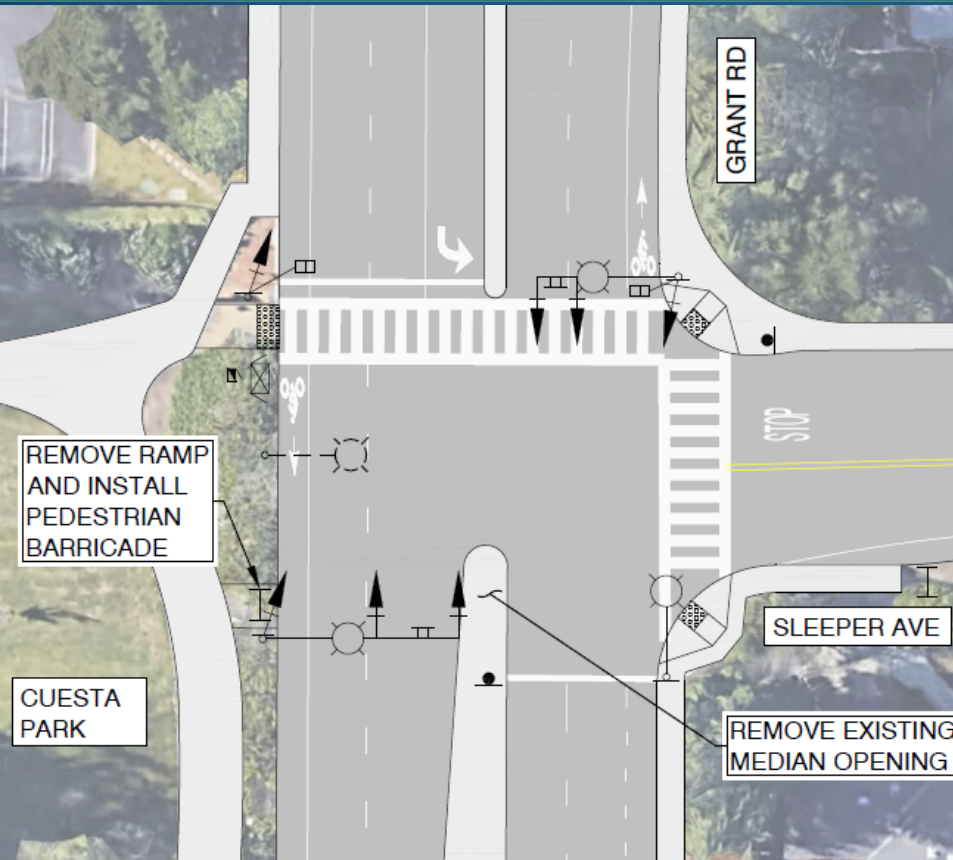
Comparison of Alternatives

Alternative 1 – PHB with a Northern Crosswalk



Comparison of Alternatives

Alternative 1 – PHB with a Northern Crosswalk



Pros

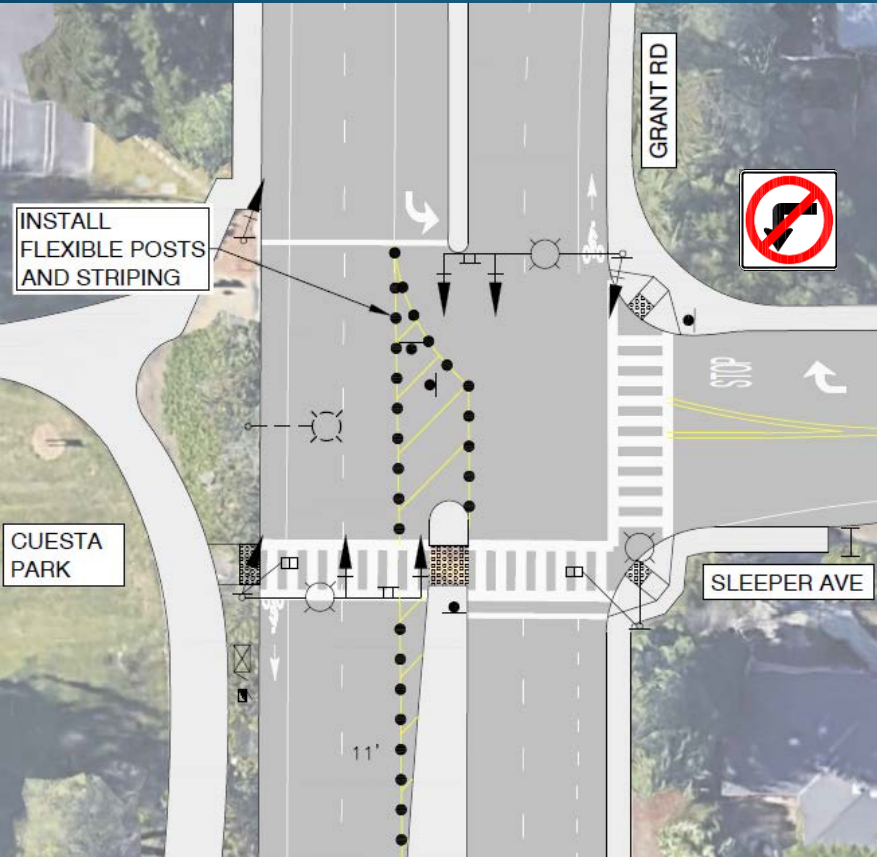
- Yield Rate exceeds 90%
- Beacons are off when there are no pedestrians
- No left turn conflict for pedestrians crossing
- Can be coordinated with nearby traffic signals

Cons

- Increase motorist delay time
- Right turn movement conflicts with pedestrians
- Motorists have less familiarity

Comparison of Alternatives

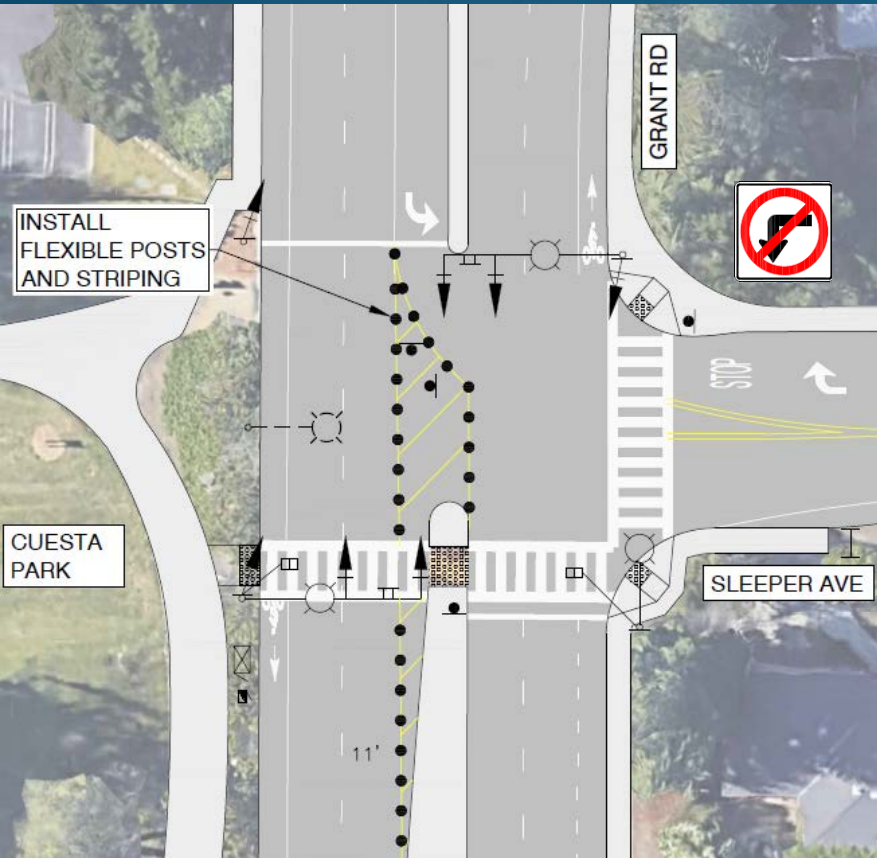
Alternative 2 - PHB With a Southern Crosswalk and Left-turn Restriction



- Peak Hour Traffic Counts for Left Turns from Sleeper Avenue (April 2019)
 - 7:30 A.M. – 8:30 A.M.: 3 Vehicles
 - 11:30 A.M. – 12:30 P.M.: 2 Vehicles
 - 4:30 P.M. – 5:30 P.M.: 0 Vehicles

Comparison of Alternatives

Alternative 2 - PHB With a Southern Crosswalk and Left-turn Restriction



Pros

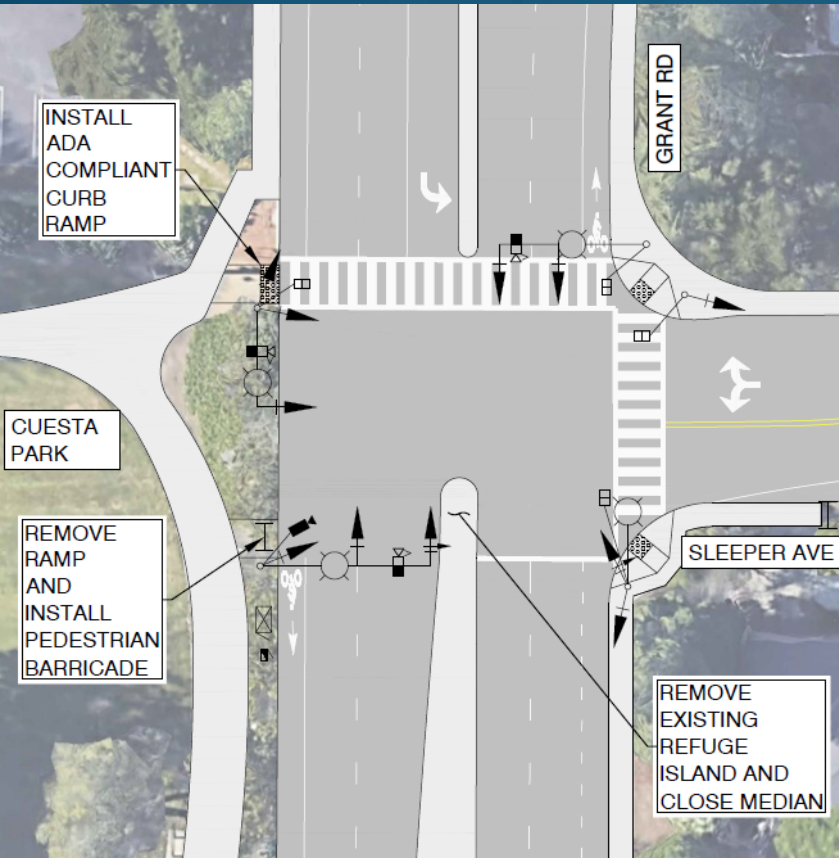
- Yield Rate exceeds 90%
- Beacons are off when there are no pedestrians
- No left turn conflict for pedestrian crossing or vehicles
- Can be coordinated with nearby traffic signals

Cons

- Increase motorist delay time
- Motorists have less familiarity
- Will eliminate left turn movement from Sleeper Avenue

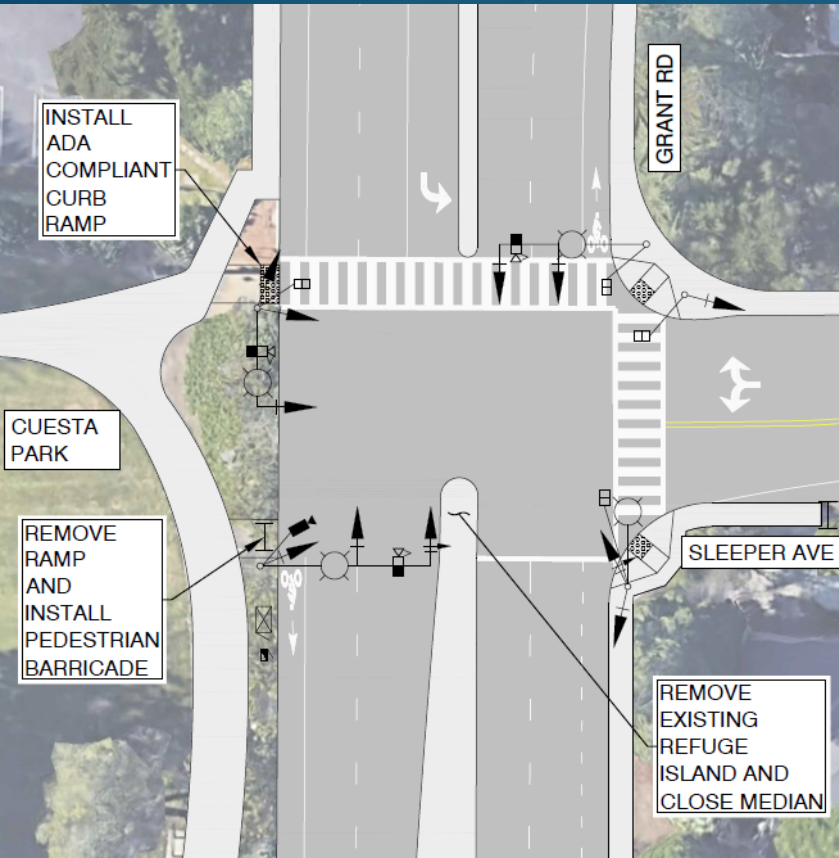
Comparison of Alternatives

Alternative 3 – Traffic Signal with a Northern Crosswalk



Comparison of Alternatives

Alternative 3 – Traffic Signal with a Northern Crosswalk



Pros

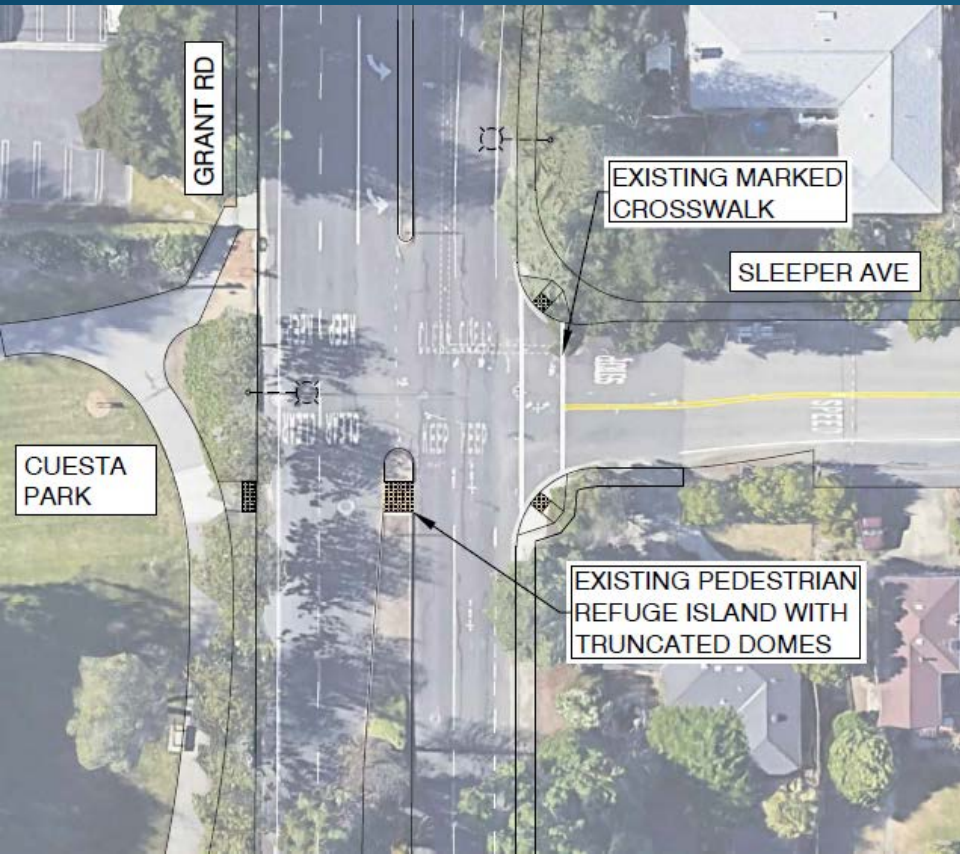
- Familiarity
- Highest rate of driver compliance
- Phases to reduce turning conflicts

Cons

- Highest Cost
- Increase in vehicular congestion and delay

Comparison of Alternatives

Alternative 4 – Keep Existing Condition as-is



Pros

- No associated cost
- Pedestrians and bicyclists tend to be more cautious crossing Grant Road

Cons

- Absence of marked crosswalk
- Distance to next crossing is far



Other Project Alternatives Considered



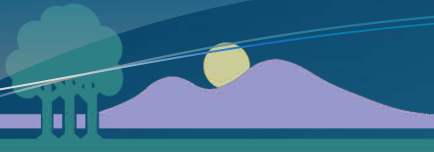
LED Enhanced Signs

- LED Enhanced Signs
 - Northern and southern crosswalks
 - Left turn restriction



Community Meeting #1

- Approximately 277 mailers sent out to community
- Held on October 22, 2020 with 28 total attendees
- Community Feedback
 - Concerns with existing intersection
 - Ped/Bike/Vehicle Safety
 - Vehicle speeds along Grant Road



Community Meeting #1

- Community Feedback
 - Supported Alternatives
 - Left-turn Restriction
 - Pedestrian Hybrid Beacon
 - Least Supported Alternatives
 - Traffic Signal
 - Keep existing conditions
 - Drivers are reluctant to use Left Turn from Sleeper to Grant during peak hours
 - This may have lowered peak hour left turn counts



Project Schedule

- Council Transportation Committee – April 2021
- Complete study by Spring/Summer 2021
- Construction funding from CIP



Questions?

For more information/Para mas informacion:

Darwin.Galang@mountainview.gov

(650) 903-6311

<https://www.mountainview.gov/GSIS>